

MANAGE THE RISING COSTS OF ENERGY.

Overview

In today's competitive business environment, cost containment is critical for success. Many companies overlook or dismiss the notion of reducing energy expenditures as a reliable means of cutting costs and increasing profits because it is a complex and time-consuming task. Reducing energy expenditures can be overwhelming due to the mountains of detailed information necessary to track energy trends. But Energy Manager 3.0 from Enerwise makes it manageable.

Enerwise Energy Manager 3.0 provides a complete picture of energy consumption in a user-friendly format:

- Consolidated information formatted into an easy-to-read report
- Attention-getting flags for inefficiencies and anomalies
- Detailed reports that improve operational efficiency and energy efficiency

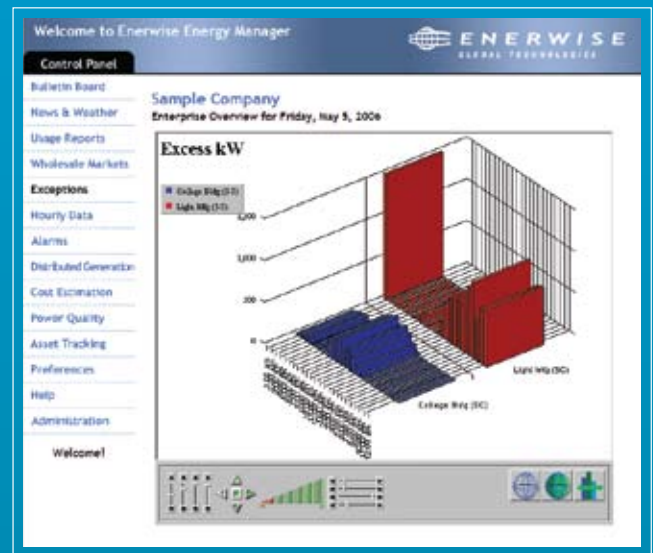
Enerwise Energy Manager 3.0 is a comprehensive analysis program designed to uncover energy infrastructural and operational inefficiencies. It has the ability to dissect and view data multi-dimensionally, giving insight across time periods and site locations. Energy Manager 3.0 provides alarms to pinpoint issues quickly, allowing you to correct concerns before they become problems.

Features

Standard features for Energy Manager 3.0:

- Bulletin Board
 - Personalized online communications interface.
- Usage Reports
 - Monitor and record usage and optimize electricity, gas, steam, chilled water and oil consumption.
 - Compare usage for multiple sites or the same site over different time periods.
 - Evaluate usage with day-by-day demand profiles.

Continued on back



For more information, log on to our Web site at www.enerwise.com, call 800.307.3395 or e-mail sales@enerwise.com.

Enerwise Global Technologies, Inc.
511 Schoolhouse Road, Suite 200
Kennett Square, PA 19348
Phone 610.444.1100
Fax 610.444.5501

- Calculate a demand-response customer baseline based on the appropriate RTO/ISO program comparing it to your daily load profile for ease in determining the load reduction.
- Exception Reporting
 - Receive daily consumption values that exceed forecast.
 - View site logs that reflect costs associated with excess electric consumption for selected time periods.
 - Compare actual load plots to forecasted load and established thresholds with a daily load profile.
- Hourly Date Reporting
 - Review hourly aggregate readings of enterprise-wide electric consumption.
 - Know your weekly site load data with a day-to-day comparison.
 - Receive a weekly load profile for submeters or feeds.
- News, Weather and Technology
 - Link conveniently to Web sites for news, weather and technology reports.
- Wholesale Markets Custom Tool
 - Schedule a demand-response notification for a specific location, date and time.
 - Display demand-response event notifications, which provides the users with a history document of past DR events, dates and times.
 - Develop a detailed synch-reserve summary report that includes facility, date, time and duration and is available in HTML or Excel formats.

Using Energy Manager 3.0 is an easy way to monitor your energy consumption and make a positive impact on your bottom line.

ABOUT ENERWISE

Enerwise Global Technologies, established in 1980, is a leader in demand response, energy infrastructure management and renewable energy services for commercial, institutional and industrial customers. We enable customers to reduce energy costs, comply with increasingly demanding environmental regulations, take advantage of alternative power initiatives, increase operational security and improve reliability. We deliver responsive, well-tested energy solutions, ranging from remote power monitoring and control systems to energy history analysis and real-time demand-response solutions.

Our systems and staff work around the clock to make sure you're always running smoothly and efficiently. Other companies depend on us to solve their energy problems; let us help you with yours.